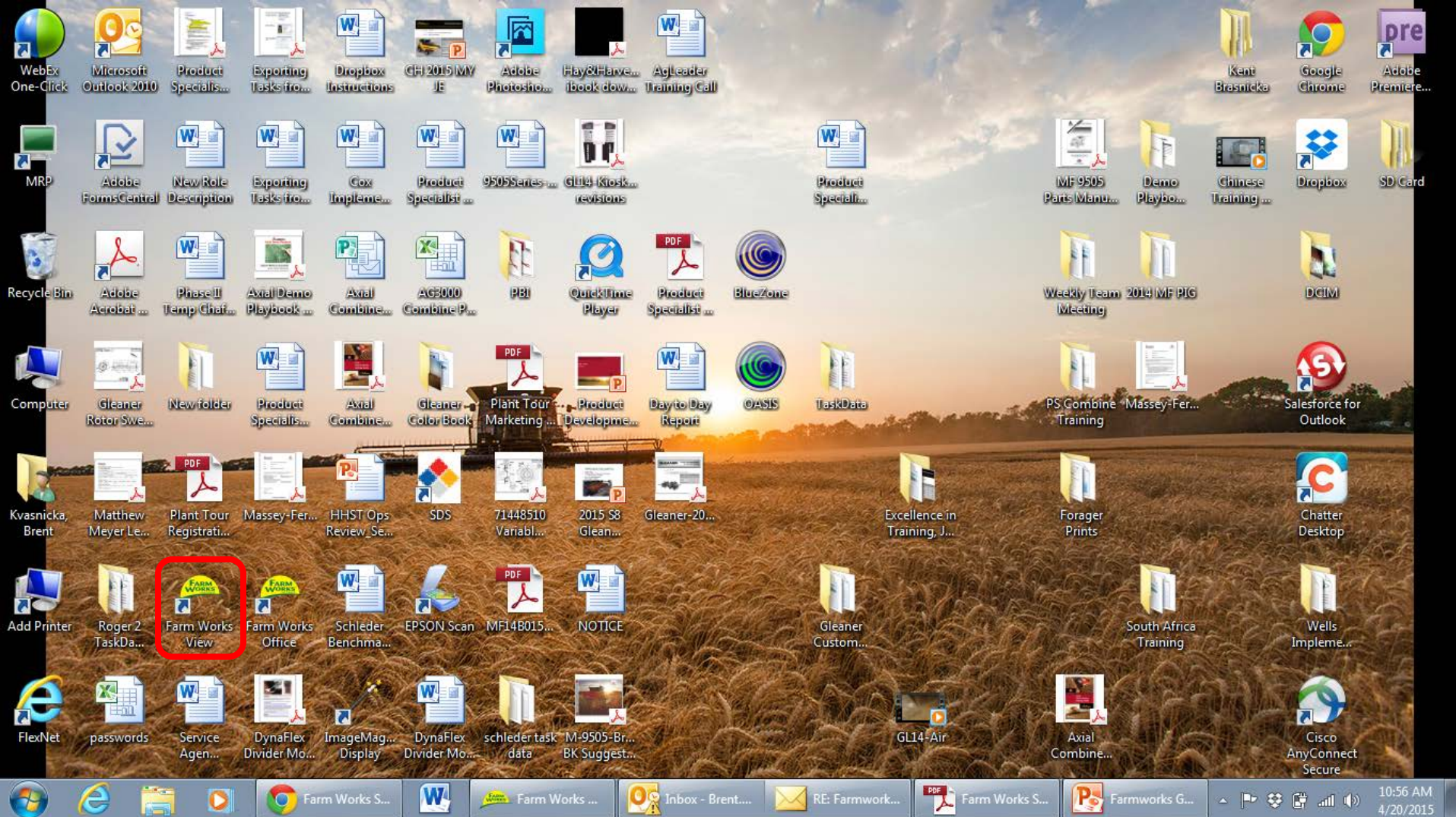


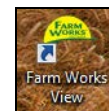


# Farmworks

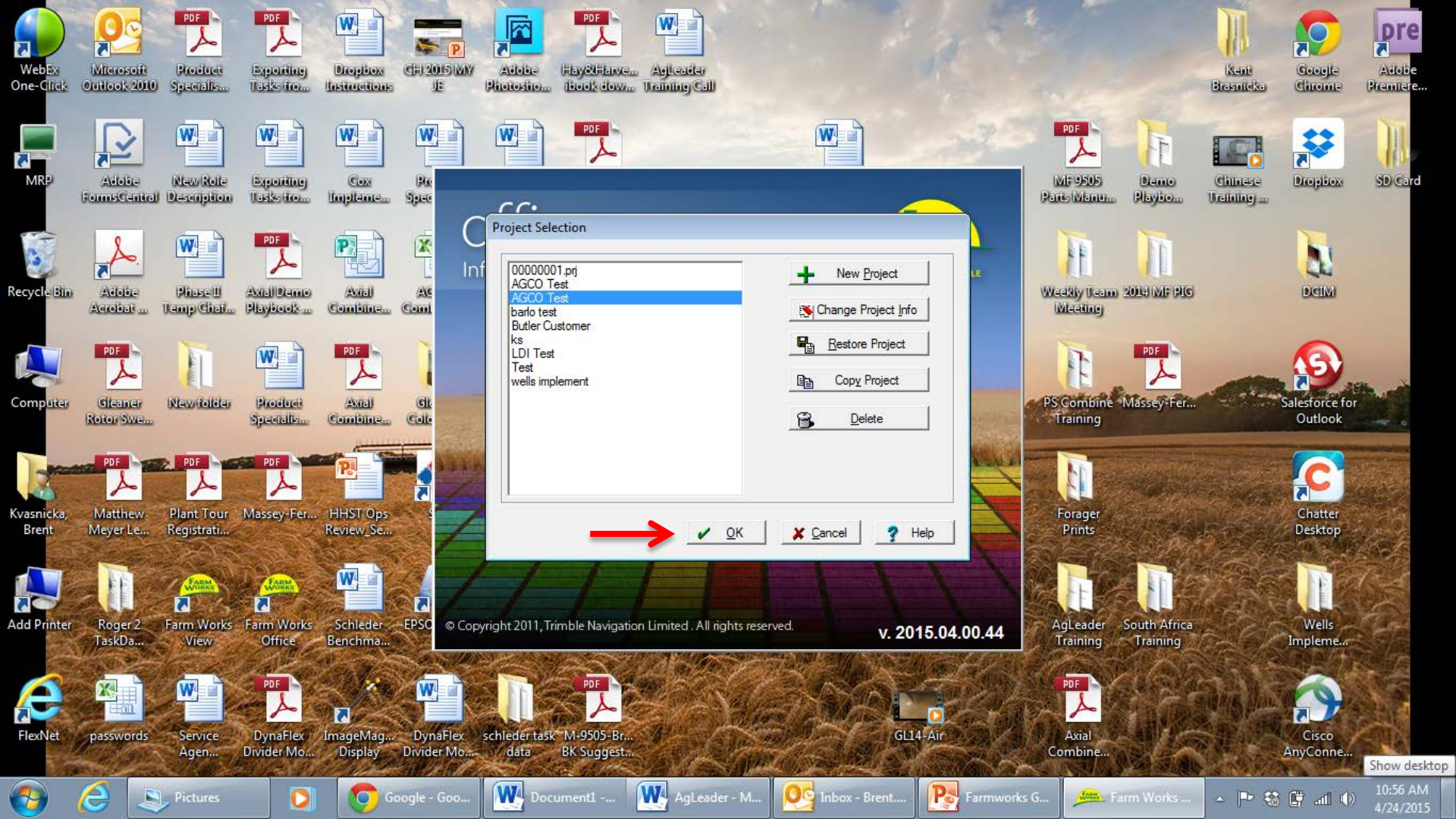
How to import yield data from combine  
C2100 into Farmworks software



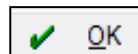
- **Locate the “Farm Works View” icon and double click it**







- **Ensure your Project is highlighted, then press “OK”**
- **For this example we will select “AGCO Test”**



Farm Works Office - AGCO Test

File View Resources Reports Tools Help

Wednesday, April 29, 2015

Job/Resource Tools

Jobs Map Weather Invoices

Filter Jobs by Selection

View	Job Name	Date	Client	Farm	Field	Year	Commodity	Type	Operator	Console #
	Daisy's - Harvest...	4/28/2015	Hogg, Boss	Hazzard County	Daisy's	2015	Soybeans	Harvesting		

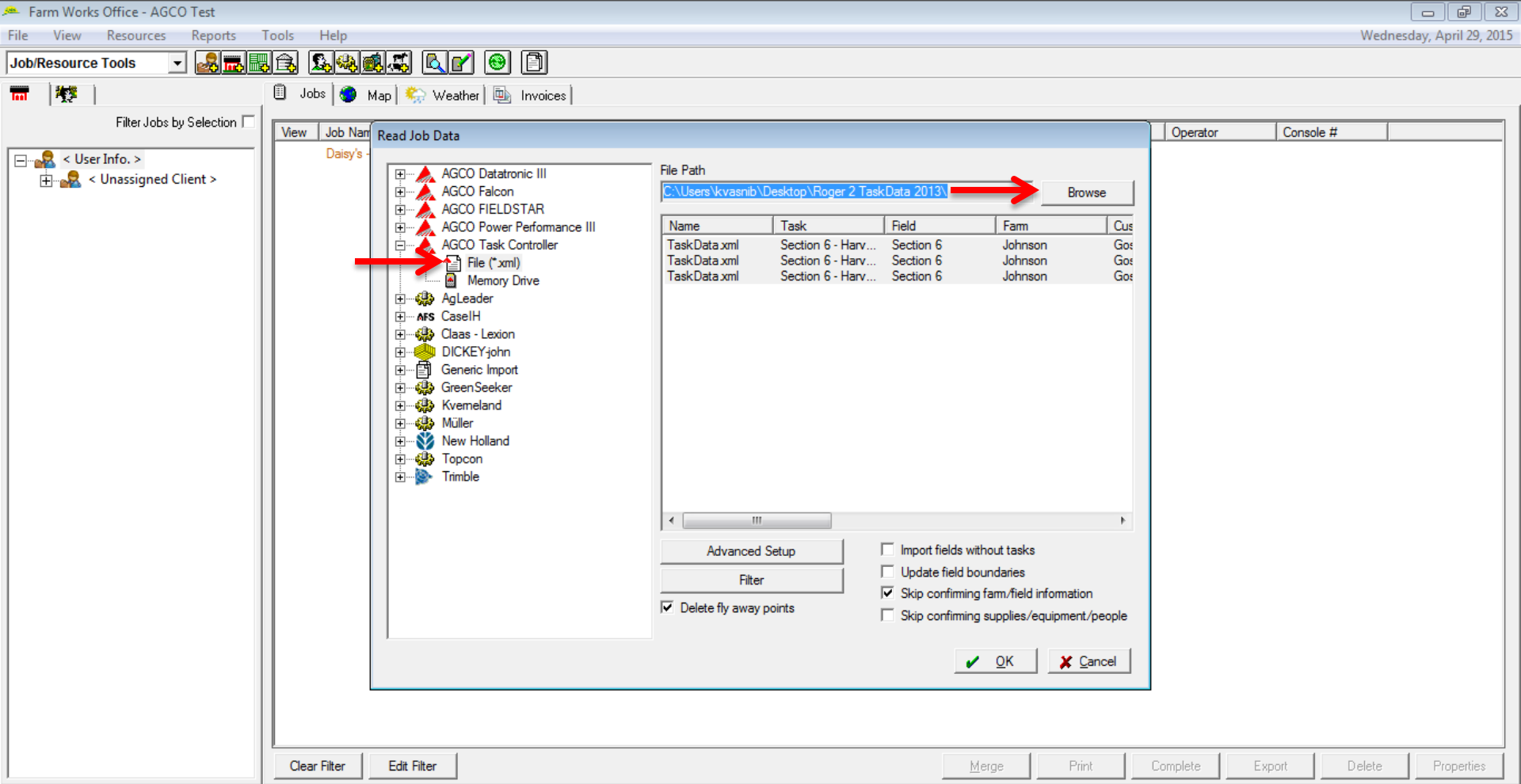
Clear Filter Edit Filter Merge Print Complete Export Delete Properties

Windows Taskbar: Pictures, Farm Work..., SVCQZ305..., system 150..., Farmworks..., Inbox - Bre..., Microsoft ...

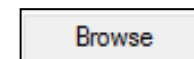
1:37 PM 5/1/2015

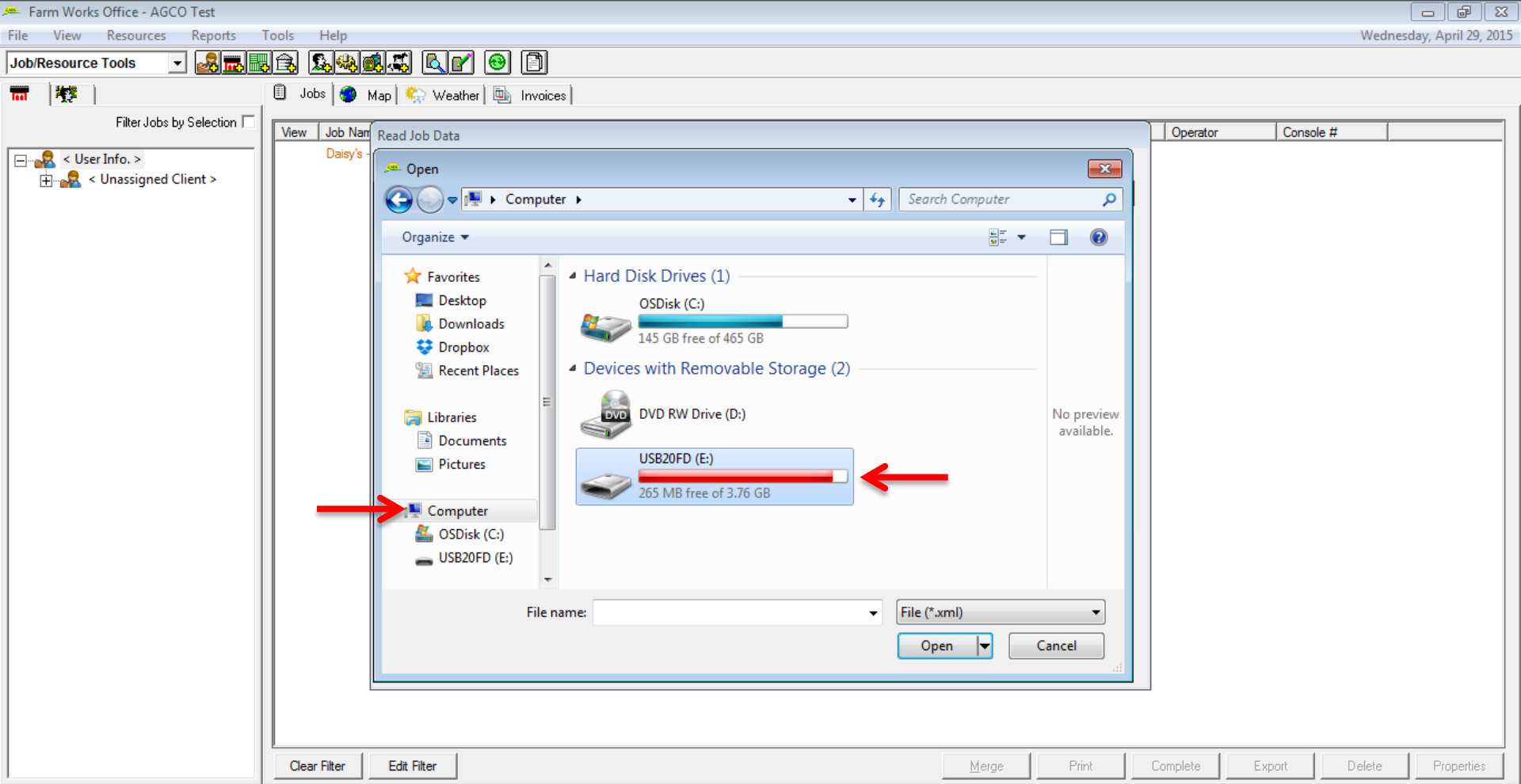
- ***Insert your USB drive containing your combine yield information into your computer***
- ***Click the "Read Job Data" icon at the top of the page***



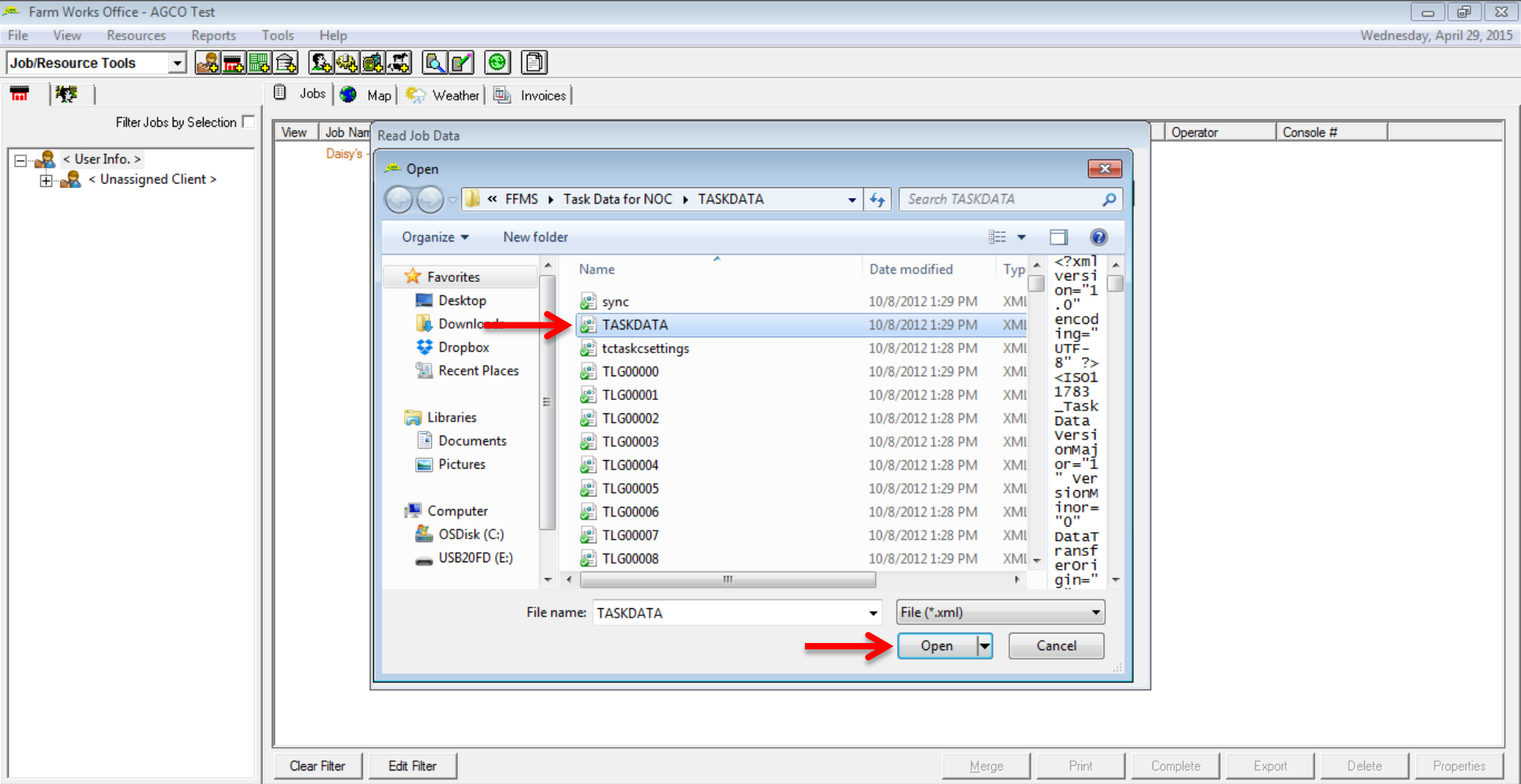


- ***Under the AGCO Task Controller tab, select “File (\*.xml)”***
- ***Next, Browse for your removable disk in the search bar***

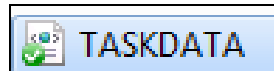




- ***Navigate to “Computer” and double click the “USB Removable Disk”***



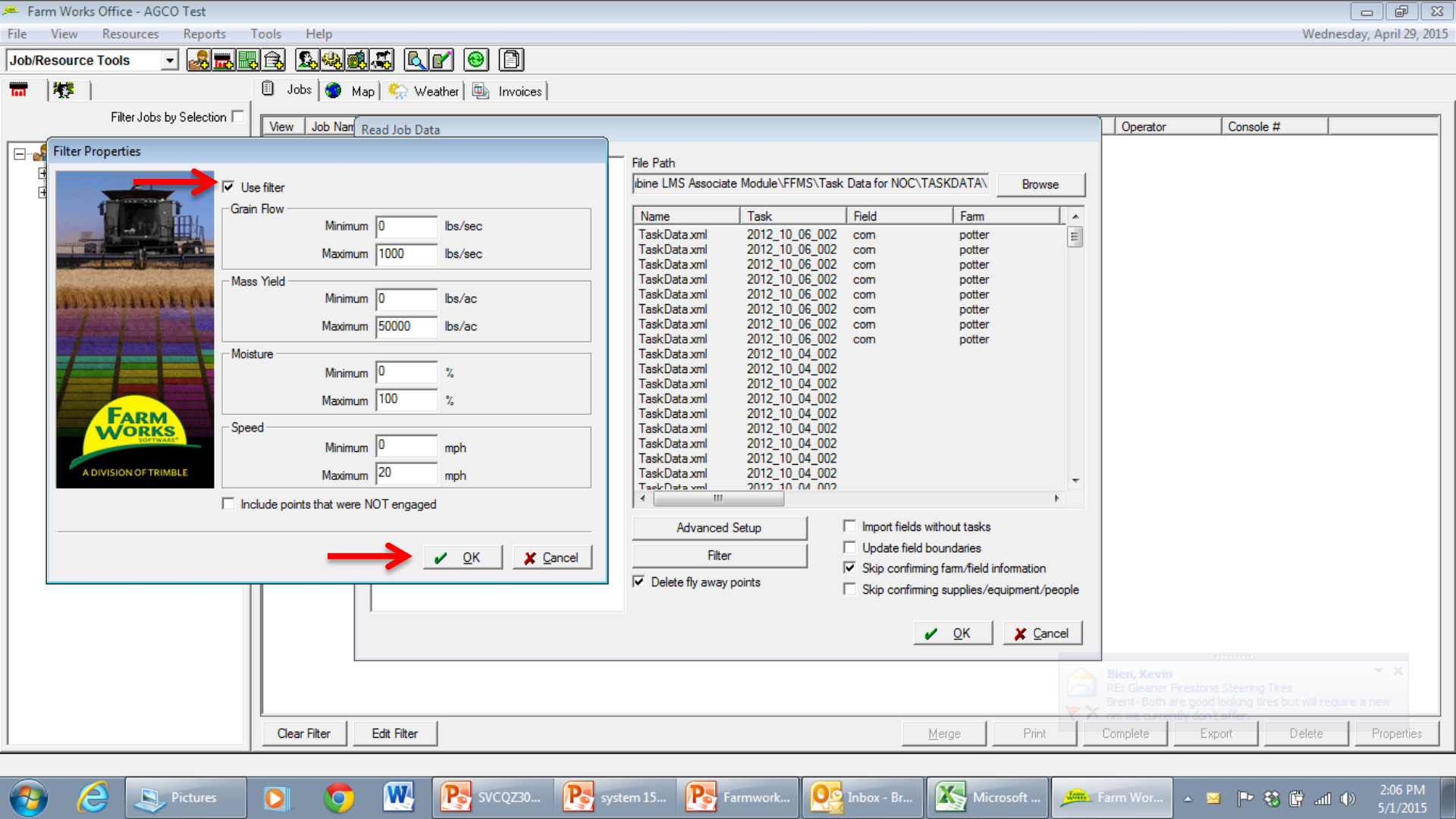
- **Locate the file labeled “TASKDATA” and highlight it**



- **Press “Open”** 

- **Be patient and allow all the data to load into Farmworks as this may take some time**





- **Check the box to use the filter and press "OK" to continue**



Job/Resource Tools

Jobs Map Weather Invoices

Filter Jobs by Selection

< User Info. >  
< Unassigned Client >

View Job Name Linker: commodities

Daisy's

Operation Resources  
Unknown Crop -> <new>

Desktop Resources  
<new>  
Avocado  
Soybeans

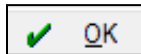
<- Link ->  
Create ->

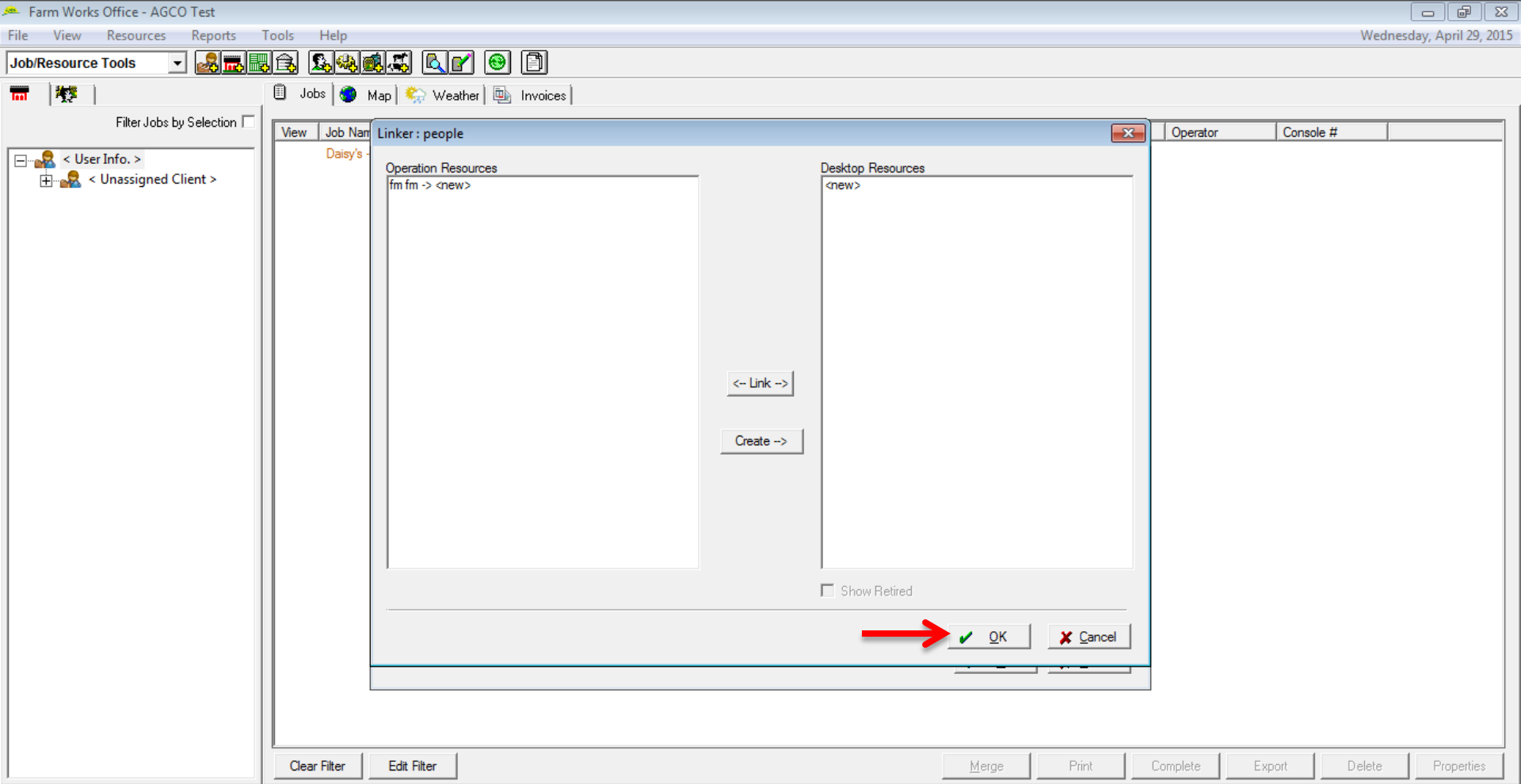
Show Retired

OK Cancel

Clear Filter Edit Filter Merge Print Complete Export Delete Properties

- Press "OK"





- **Press "OK"** 

File View Resources Reports Tools Help

Job/Resource Tools

Jobs Map Weather Invoices

Filter Jobs by Selection

< User Info. >  
< Unassigned Client >

View Job Name Linker: equipment

Daisy's

Operation Resources  
16490 -> <new>

Desktop Resources  
<new>  
Gleaner Lee

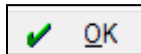
<- Link ->  
Create ->

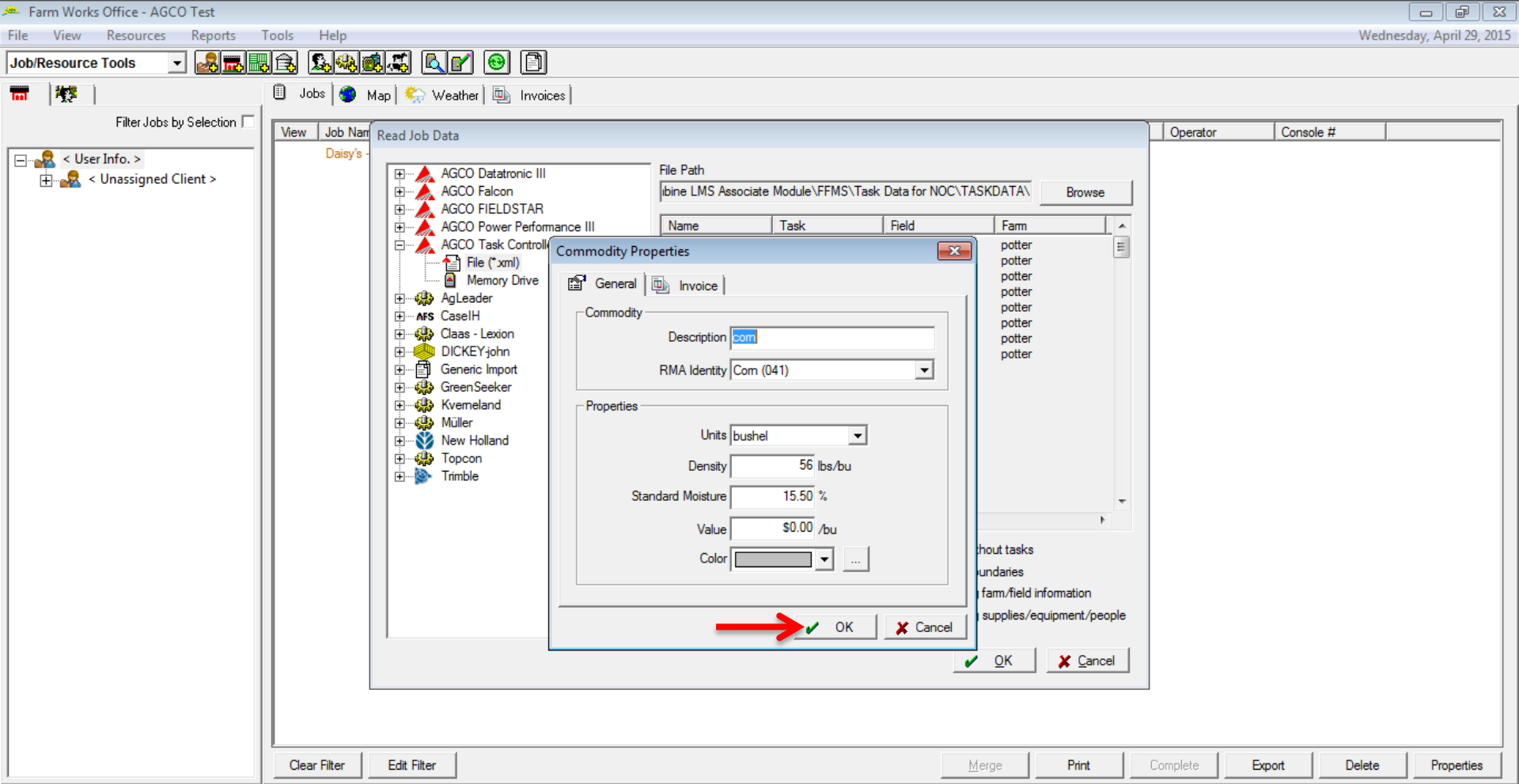
Show Retired

OK Cancel

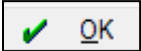
Clear Filter Edit Filter Merge Print Complete Export Delete Properties

- Press "OK"

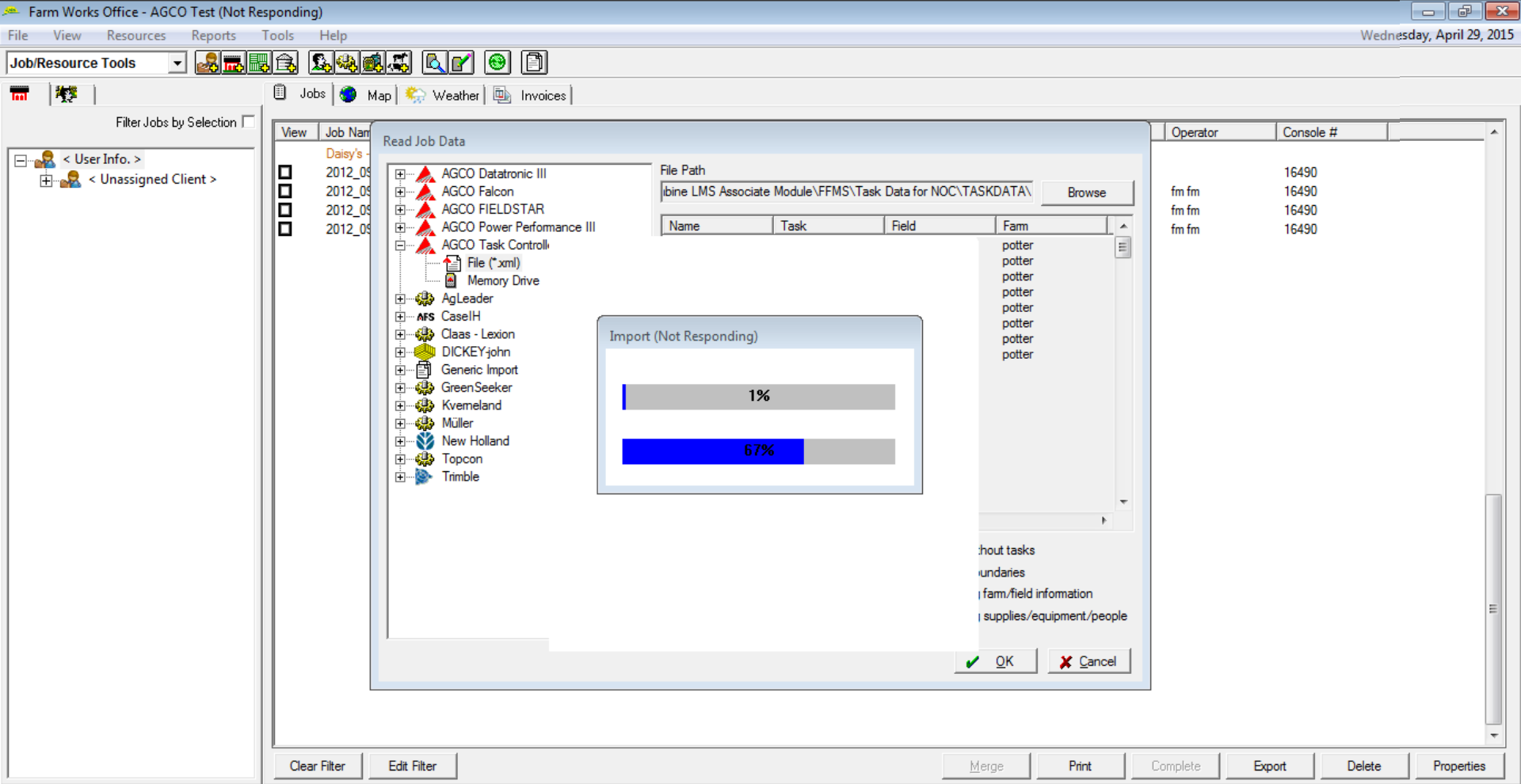




- Press "OK"







- ***Don't get frustrated and throw your computer off the top of your town water tower***
- ***Be patient and allow the system to respond***

Farm Works Office - AGCO Test Wednesday, April 29, 2015

File View Resources Reports Tools Help

Job/Resource Tools Jobs Map Weather Invoices

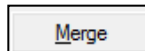
Filter Jobs by Selection

- < User Info. >
- < Unassigned Client >

View	Job Name	Date	Client	Farm	Field	Year	Commodity	Type	Operator	Console #
<input type="checkbox"/>	2012_09_12_001	9/12/2012				2012	Unknown ...	Harvesting		16490
<input type="checkbox"/>	2012_09_12_001	9/12/2012				2012	Unknown ...	Harvesting		16490
<input type="checkbox"/>	2012_09_12_001	9/12/2012				2012	Unknown ...	Harvesting		16490
<input type="checkbox"/>	2012_09_12_001	9/12/2012				2012	Unknown ...	Harvesting		16490
<input type="checkbox"/>	2012_09_12_001	9/12/2012				2012	Unknown ...	Harvesting		16490
<input type="checkbox"/>	2012_09_12_001	9/12/2012				2012	Unknown ...	Harvesting		16490
<input type="checkbox"/>	2012_09_12_001	9/12/2012				2012	Unknown ...	Harvesting		16490
<input type="checkbox"/>	2012_09_03_005	9/7/2012			100 a field	2012	Unknown ...	Harvesting	fm fm	16490
<input type="checkbox"/>	2012_09_02_00...	9/2/2012			sec17	2012	Unknown ...	Harvesting	fm fm	16490
<input type="checkbox"/>	2012_09_02_00...	9/3/2012			sec17	2012	Unknown ...	Harvesting	fm fm	16490
<input type="checkbox"/>	2012_09_03_005	9/3/2012			100 a field	2012	Unknown ...	Harvesting	fm fm	16490
<input type="checkbox"/>	2012_09_07_002	9/7/2012			sec17	2012	com	Harvesting	fm fm	16490
<input type="checkbox"/>	2012_09_07_002	9/10/2012			sec17	2012	com	Harvesting	fm fm	16490
<input type="checkbox"/>	2012_09_13_001	9/13/2012			north east 40 se...	2012	Unknown ...	Harvesting	fm fm	16490
<input type="checkbox"/>	2012_09_13_002	9/13/2012			23 a across river	2012	Unknown ...	Harvesting	fm fm	16490
<input type="checkbox"/>	2012_09_13_002	9/14/2012			23 a across river	2012	Unknown ...	Harvesting	fm fm	16490
<input type="checkbox"/>	2012_09_14_001	9/14/2012			100 a field	2012	Unknown ...	Harvesting	fm fm	16490
<input type="checkbox"/>	2012_09_14_001	9/15/2012			100 a field	2012	Unknown ...	Harvesting		16490
<input type="checkbox"/>	2012_09_16_002	9/18/2012			23acres	2012	Unknown ...	Harvesting	fm fm	16490
<input type="checkbox"/>	2012_09_16_002	9/19/2012			23acres	2012	Unknown ...	Harvesting	fm fm	16490
<input type="checkbox"/>	2012_09_16_002	9/21/2012			23acres	2012	Unknown ...	Harvesting	fm fm	16490
<input type="checkbox"/>	2012_09_19_001	9/19/2012			east 40	2012	Unknown ...	Harvesting		16490
<input type="checkbox"/>	2012_09_21_001	9/21/2012			west asgr0 beans	2012	Unknown ...	Harvesting	fm fm	16490
<input type="checkbox"/>	2012_09_22_005	9/22/2012			n0rth fam	2012	Unknown ...	Harvesting		16490
<input type="checkbox"/>	2012_09_24_001	9/24/2012			95 a com field	2012	Unknown ...	Harvesting	fm fm	16490
<input type="checkbox"/>	2012_09_24_001	9/25/2012			95 a com field	2012	Unknown ...	Harvesting		16490
<input type="checkbox"/>	2012_09_27_002	9/28/2012			com field	2012	Unknown ...	Harvesting	fm fm	16490
<input type="checkbox"/>	2012_09_27_002	9/29/2012			com field	2012	Unknown ...	Harvesting	fm fm	16490
<input type="checkbox"/>	2012_10_01_002	10/1/2012			com field	2012	Unknown ...	Harvesting	fm fm	16490
<input checked="" type="checkbox"/>	2012_10_06_002	10/6/2012			com	2012	Unknown ...	Harvesting		16490
<input checked="" type="checkbox"/>	2012_10_06_002	10/8/2012			com	2012	Unknown ...	Harvesting	fm fm	16490

Clear Filter Edit Filter Merge Print Complete Export Delete Properties

- **All the tasks from your combine monitor will load into the system**
- **In this case we have two separate tasks for the same field, so we will merge these two files together (highlighted blue)**
- **Left click on one of the fields, then hold control on the keyboard and left click the additional field. Both fields should highlight blue as shown above.**
- **Click "Merge" to combine the two fields**





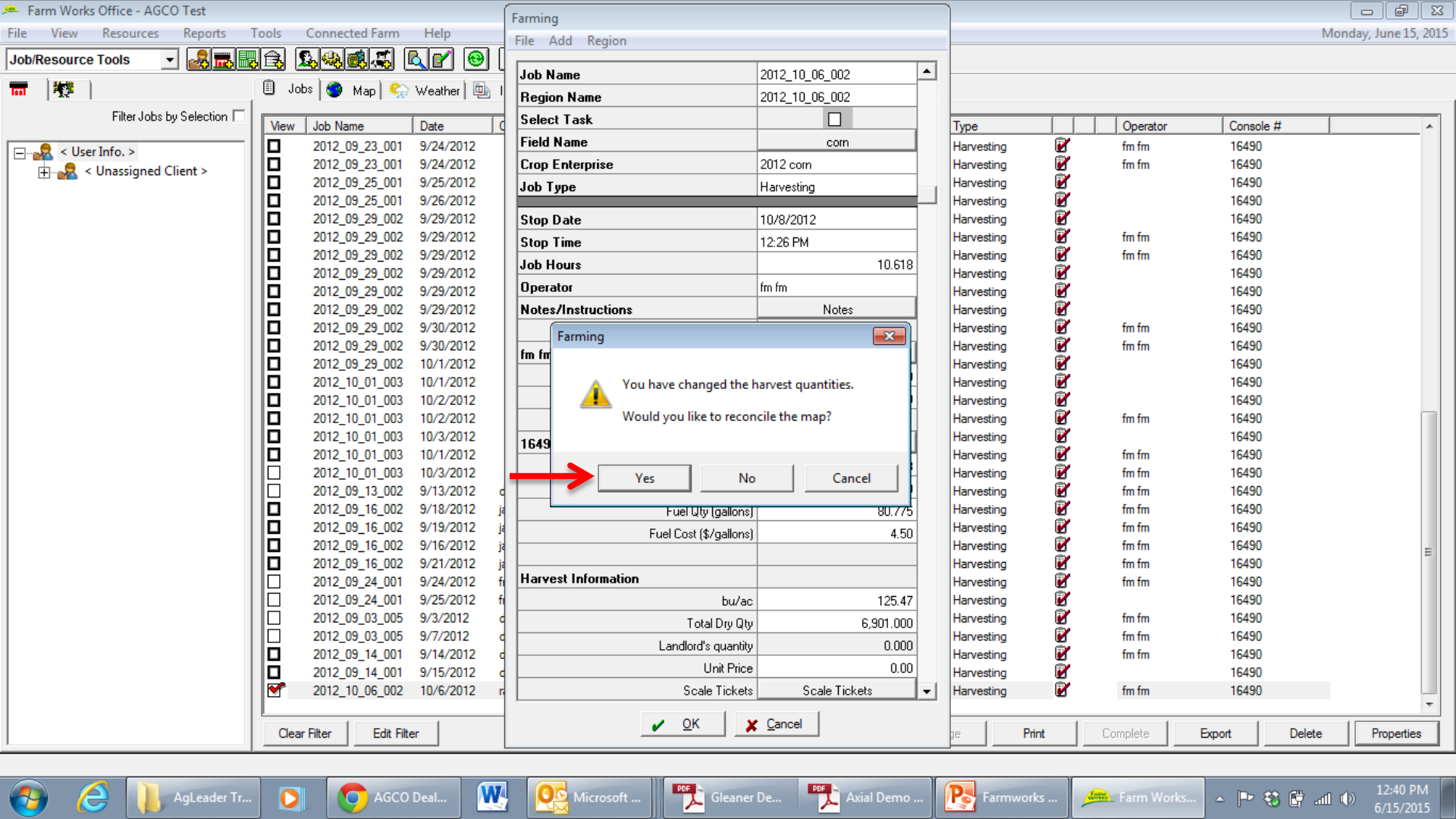




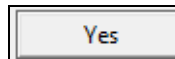








- **Select "Yes" to reconcile the map**







Farm Works Office - AGCO Test

Monday, June 15, 2015

File View Resources Reports Tools Connected Farm Help

Job/Resource Tools

Jobs Map Weather Invoices


Filter Jobs by Selection

- < User Info. >
- < Unassigned Client >

View	Job Name	Date	Client	Fam	Field	Year	Commodity	Type	Operator	Console #
<input type="checkbox"/>	2012_09_23_001	9/24/2012				2012	Unknown ...	Harvesting	fm fm	16490
<input type="checkbox"/>	2012_09_23_001	9/24/2012				2012	Unknown ...	Harvesting	fm fm	16490
<input type="checkbox"/>	2012_09_25_001	9/25/2012				2012	Unknown ...	Harvesting		16490
<input type="checkbox"/>	2012_09_25_001	9/26/2012				2012	Unknown ...	Harvesting		16490
<input type="checkbox"/>	2012_09_29_002	9/29/2012				2012	Unknown ...	Harvesting		16490
<input type="checkbox"/>	2012_09_29_002	9/29/2012				2012	Unknown ...	Harvesting	fm fm	16490
<input type="checkbox"/>	2012_09_29_002	9/29/2012				2012	Unknown ...	Harvesting	fm fm	16490
<input type="checkbox"/>	2012_09_29_002	9/29/2012				2012	Unknown ...	Harvesting		16490
<input type="checkbox"/>	2012_09_29_002	9/29/2012				2012	Unknown ...	Harvesting		16490
<input type="checkbox"/>	2012_09_29_002	9/29/2012				2012	Unknown ...	Harvesting		16490
<input type="checkbox"/>	2012_09_29_002	9/30/2012				2012	Unknown ...	Harvesting	fm fm	16490
<input type="checkbox"/>	2012_09_29_002	9/30/2012				2012	Unknown ...	Harvesting	fm fm	16490
<input type="checkbox"/>	2012_09_29_002	10/1/2012				2012	Unknown ...	Harvesting		16490
<input type="checkbox"/>	2012_10_01_003	10/1/2012				2012	Unknown ...	Harvesting		16490
<input type="checkbox"/>	2012_10_01_003	10/2/2012				2012	Unknown ...	Harvesting		16490
<input type="checkbox"/>	2012_10_01_003	10/2/2012				2012	Unknown ...	Harvesting	fm fm	16490
<input type="checkbox"/>	2012_10_01_003	10/3/2012				2012	Unknown ...	Harvesting		16490
<input type="checkbox"/>	2012_10_01_003	10/1/2012				2012	Unknown ...	Harvesting	fm fm	16490
<input type="checkbox"/>	2012_10_01_003	10/3/2012				2012	Unknown ...	Harvesting	fm fm	16490
<input type="checkbox"/>	2012_09_13_002	9/13/2012				2012	Unknown ...	Harvesting	fm fm	16490
<input type="checkbox"/>	2012_09_16_002	9/18/2012				2012	Unknown ...	Harvesting	fm fm	16490
<input type="checkbox"/>	2012_09_16_002	9/19/2012			23acres	2012	Unknown ...	Harvesting	fm fm	16490
<input type="checkbox"/>	2012_09_16_002	9/16/2012			23acres	2012	Unknown ...	Harvesting	fm fm	16490
<input type="checkbox"/>	2012_09_16_002	9/21/2012			23acres	2012	Unknown ...	Harvesting	fm fm	16490
<input type="checkbox"/>	2012_09_24_001	9/24/2012			95 a com field	2012	Unknown ...	Harvesting	fm fm	16490
<input type="checkbox"/>	2012_09_24_001	9/25/2012			95 a com field	2012	Unknown ...	Harvesting		16490
<input type="checkbox"/>	2012_09_03_005	9/3/2012			100 a field	2012	Unknown ...	Harvesting	fm fm	16490
<input type="checkbox"/>	2012_09_03_005	9/7/2012			100 a field	2012	Unknown ...	Harvesting	fm fm	16490
<input type="checkbox"/>	2012_09_14_001	9/14/2012			100 a field	2012	Unknown ...	Harvesting	fm fm	16490
<input type="checkbox"/>	2012_09_14_001	9/15/2012			100 a field	2012	Unknown ...	Harvesting		16490
<input checked="" type="checkbox"/>	2012_10_06_002	10/6/2012			com	2012	com	Harvesting	fm fm	16490

Clear Filter Edit Filter Merge Print Complete Export Delete Properties

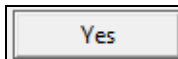
Variety Map

 The Variety Map Layer requires refreshing in order to have correct Yield by Variety Reports.

Do you wish to refresh the map?




Yes  No

- Select "Yes"



Farm Works Office - AGCO Test Monday, June 15, 2015

File View Resources Reports Tools Connected Farm Help

Job/Resource Tools  Map  Weather  Invoices

Filter Jobs by Selection

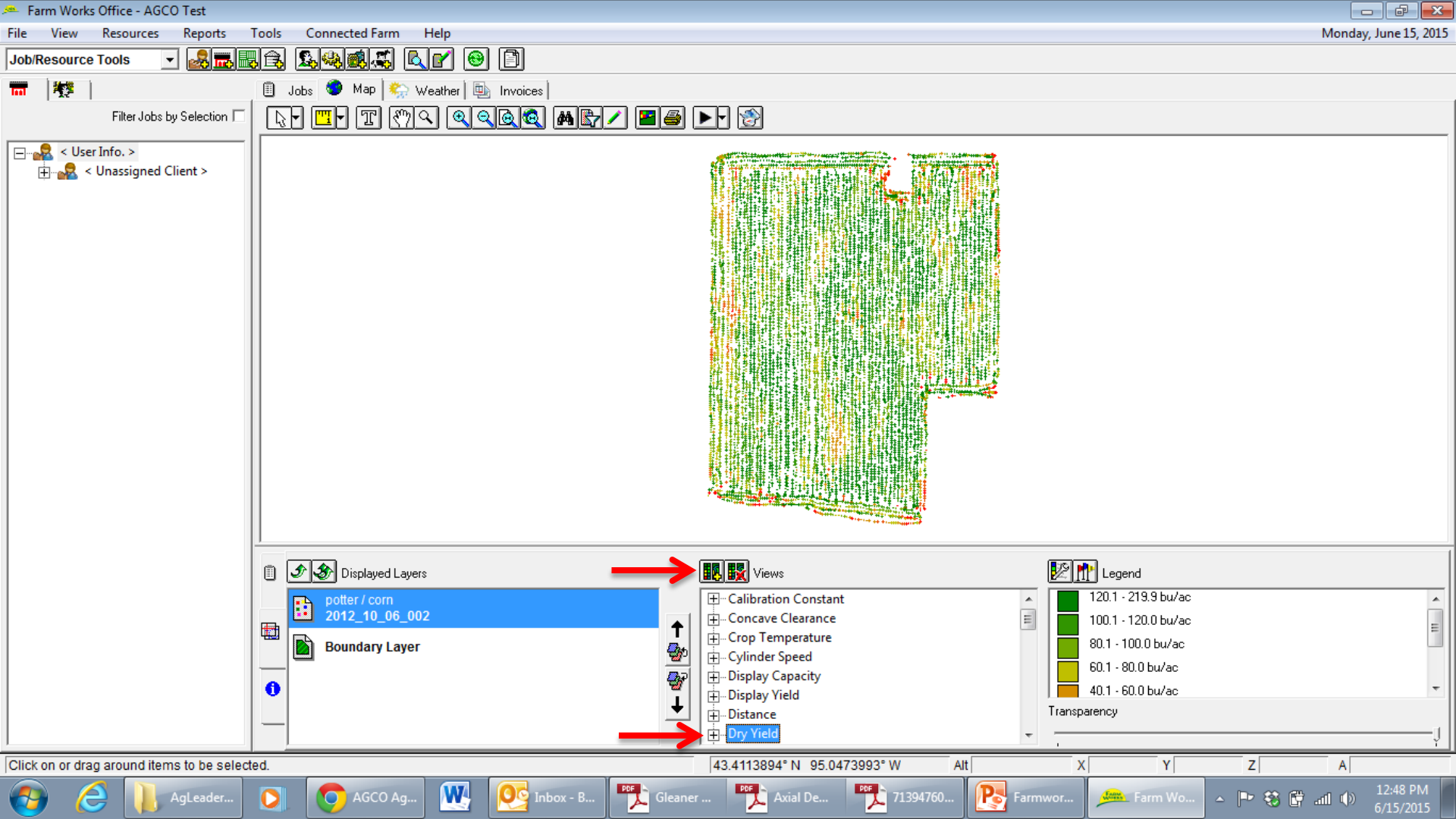
- < User Info. >
- < Unassigned Client >

View	Job Name	Date	Client	Fam	Field	Year	Commodity	Type	Operator	Console #
<input type="checkbox"/>	2012_09_23_001	9/24/2012				2012	Unknown ...	Harvesting	fm fm	16490
<input type="checkbox"/>	2012_09_23_001	9/24/2012				2012	Unknown ...	Harvesting	fm fm	16490
<input type="checkbox"/>	2012_09_25_001	9/25/2012				2012	Unknown ...	Harvesting		16490
<input type="checkbox"/>	2012_09_25_001	9/26/2012				2012	Unknown ...	Harvesting		16490
<input type="checkbox"/>	2012_09_29_002	9/29/2012				2012	Unknown ...	Harvesting		16490
<input type="checkbox"/>	2012_09_29_002	9/29/2012				2012	Unknown ...	Harvesting	fm fm	16490
<input type="checkbox"/>	2012_09_29_002	9/29/2012				2012	Unknown ...	Harvesting	fm fm	16490
<input type="checkbox"/>	2012_09_29_002	9/29/2012				2012	Unknown ...	Harvesting		16490
<input type="checkbox"/>	2012_09_29_002	9/29/2012				2012	Unknown ...	Harvesting		16490
<input type="checkbox"/>	2012_09_29_002	9/29/2012				2012	Unknown ...	Harvesting		16490
<input type="checkbox"/>	2012_09_29_002	9/29/2012				2012	Unknown ...	Harvesting	fm fm	16490
<input type="checkbox"/>	2012_09_29_002	9/30/2012				2012	Unknown ...	Harvesting	fm fm	16490
<input type="checkbox"/>	2012_09_29_002	9/30/2012				2012	Unknown ...	Harvesting	fm fm	16490
<input type="checkbox"/>	2012_09_29_002	10/1/2012				2012	Unknown ...	Harvesting		16490
<input type="checkbox"/>	2012_10_01_003	10/1/2012				2012	Unknown ...	Harvesting		16490
<input type="checkbox"/>	2012_10_01_003	10/2/2012				2012	Unknown ...	Harvesting		16490
<input type="checkbox"/>	2012_10_01_003	10/2/2012				2012	Unknown ...	Harvesting	fm fm	16490
<input type="checkbox"/>	2012_10_01_003	10/3/2012				2012	Unknown ...	Harvesting		16490
<input type="checkbox"/>	2012_10_01_003	10/1/2012				2012	Unknown ...	Harvesting	fm fm	16490
<input type="checkbox"/>	2012_10_01_003	10/3/2012				2012	Unknown ...	Harvesting	fm fm	16490
<input type="checkbox"/>	2012_09_13_002	9/13/2012			23 a across river	2012	com	Harvesting	fm fm	16490
<input type="checkbox"/>	2012_09_16_002	9/18/2012			23acres	2012	Unknown ...	Harvesting	fm fm	16490
<input type="checkbox"/>	2012_09_16_002	9/19/2012			23acres	2012	Unknown ...	Harvesting	fm fm	16490
<input type="checkbox"/>	2012_09_16_002	9/16/2012			23acres	2012	Unknown ...	Harvesting	fm fm	16490
<input type="checkbox"/>	2012_09_16_002	9/21/2012			23acres	2012	Unknown ...	Harvesting	fm fm	16490
<input type="checkbox"/>	2012_09_24_001	9/24/2012			95 a com field	2012	Unknown ...	Harvesting	fm fm	16490
<input type="checkbox"/>	2012_09_24_001	9/25/2012			95 a com field	2012	Unknown ...	Harvesting		16490
<input type="checkbox"/>	2012_09_03_005	9/3/2012			100 a field	2012	Unknown ...	Harvesting	fm fm	16490
<input type="checkbox"/>	2012_09_03_005	9/7/2012			100 a field	2012	Unknown ...	Harvesting	fm fm	16490
<input type="checkbox"/>	2012_09_14_001	9/14/2012			100 a field	2012	Unknown ...	Harvesting	fm fm	16490
<input type="checkbox"/>	2012_09_14_001	9/15/2012			100 a field	2012	Unknown ...	Harvesting		16490
<input checked="" type="checkbox"/>	2012_10_06_002	10/6/2012			com	2012	com	Harvesting	fm fm	16490

Clear Filter Edit Filter Merge Print Complete Export Delete Properties

- **To view the yield map, check the box next to the job you would like to view**
- **Press the “Map” tab towards the top of the page**

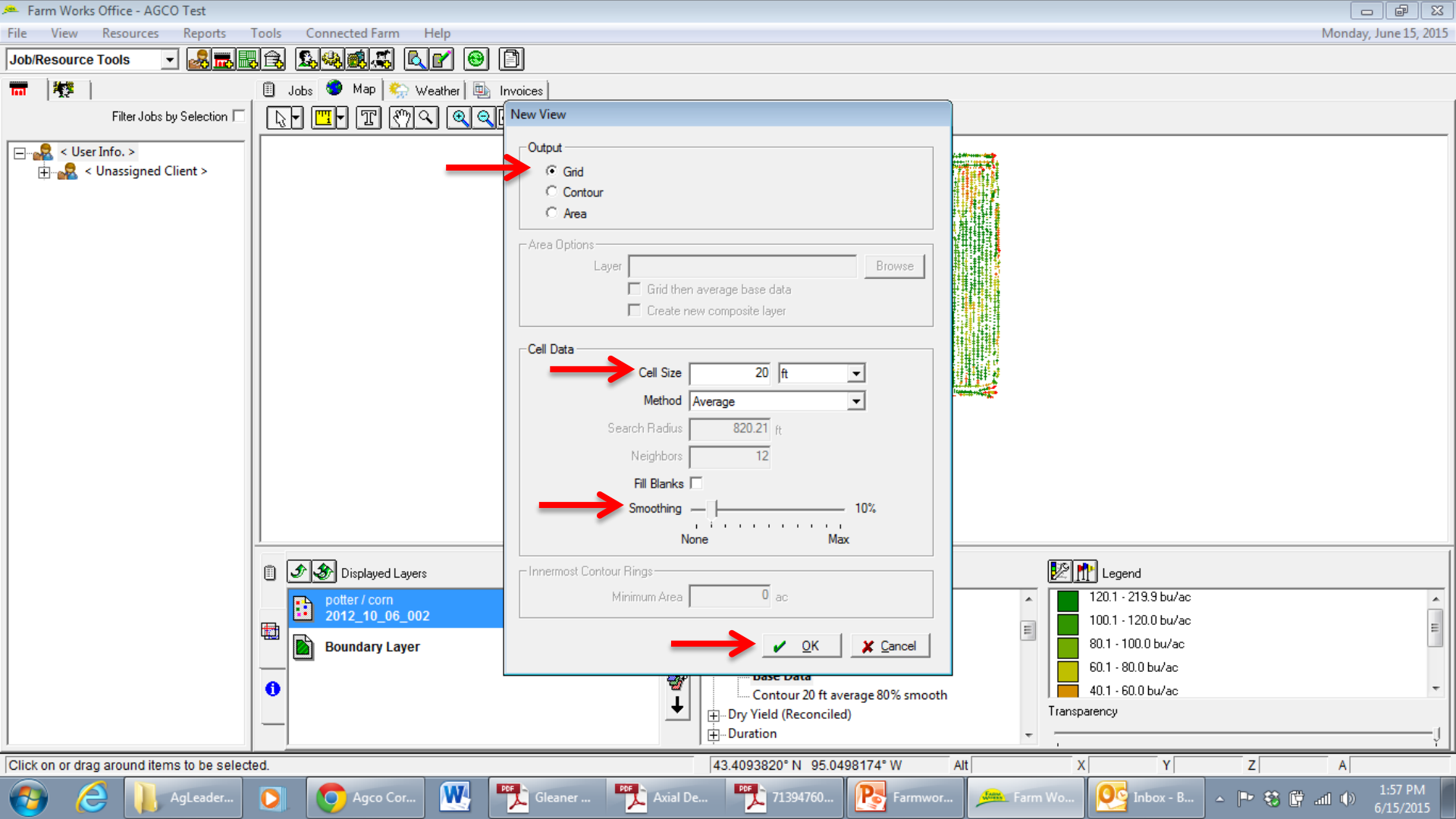


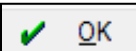


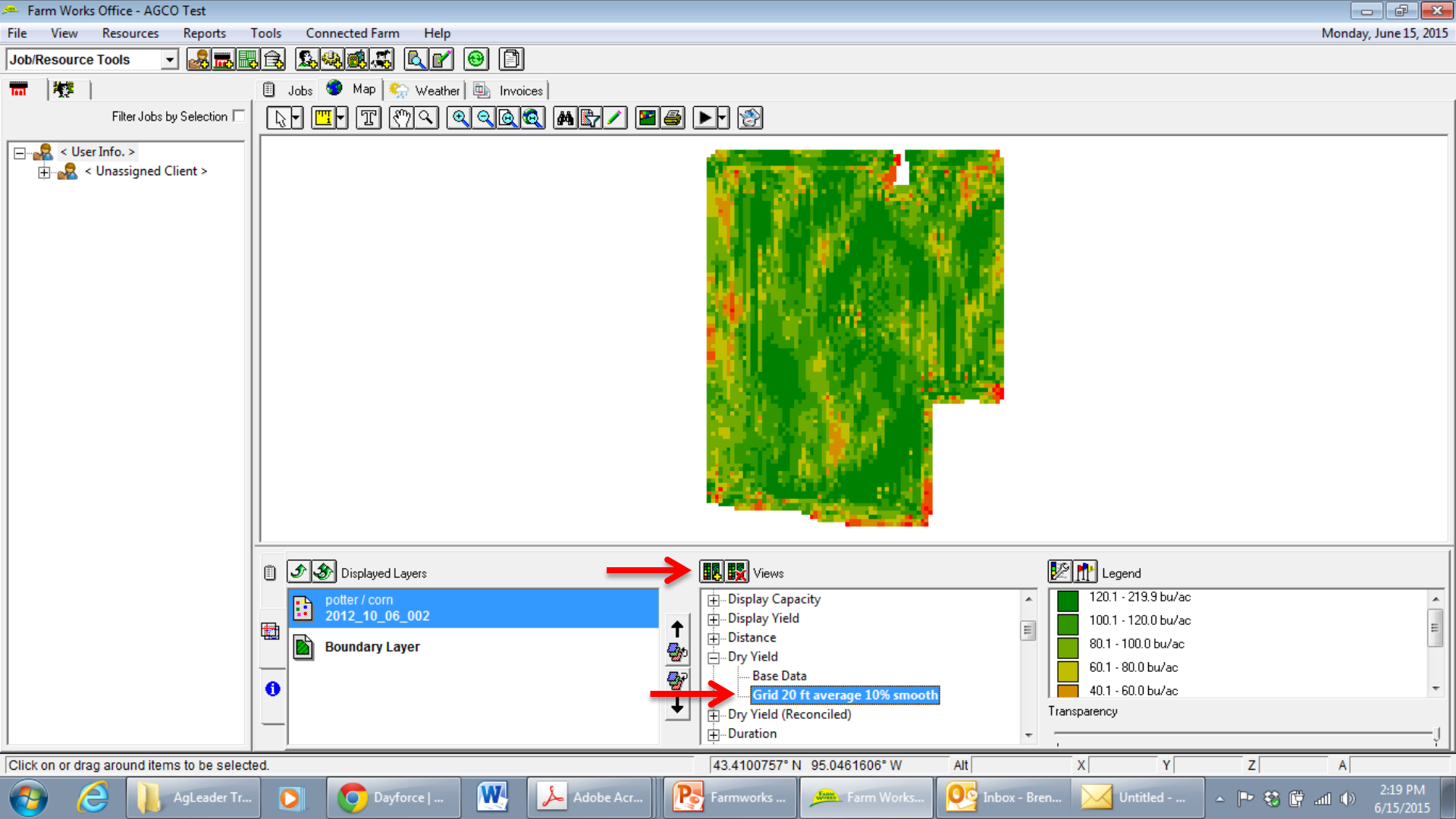
- Click on the “Dry Yield” option to view the variations in the yield on the map
- Notice the legend to the right correlating a bu/ac yield to each color on the map
- To “smooth” the map and make it look more presentable, we will add a new view
  - Highlight “Dry Yield” and press the “Add View” icon




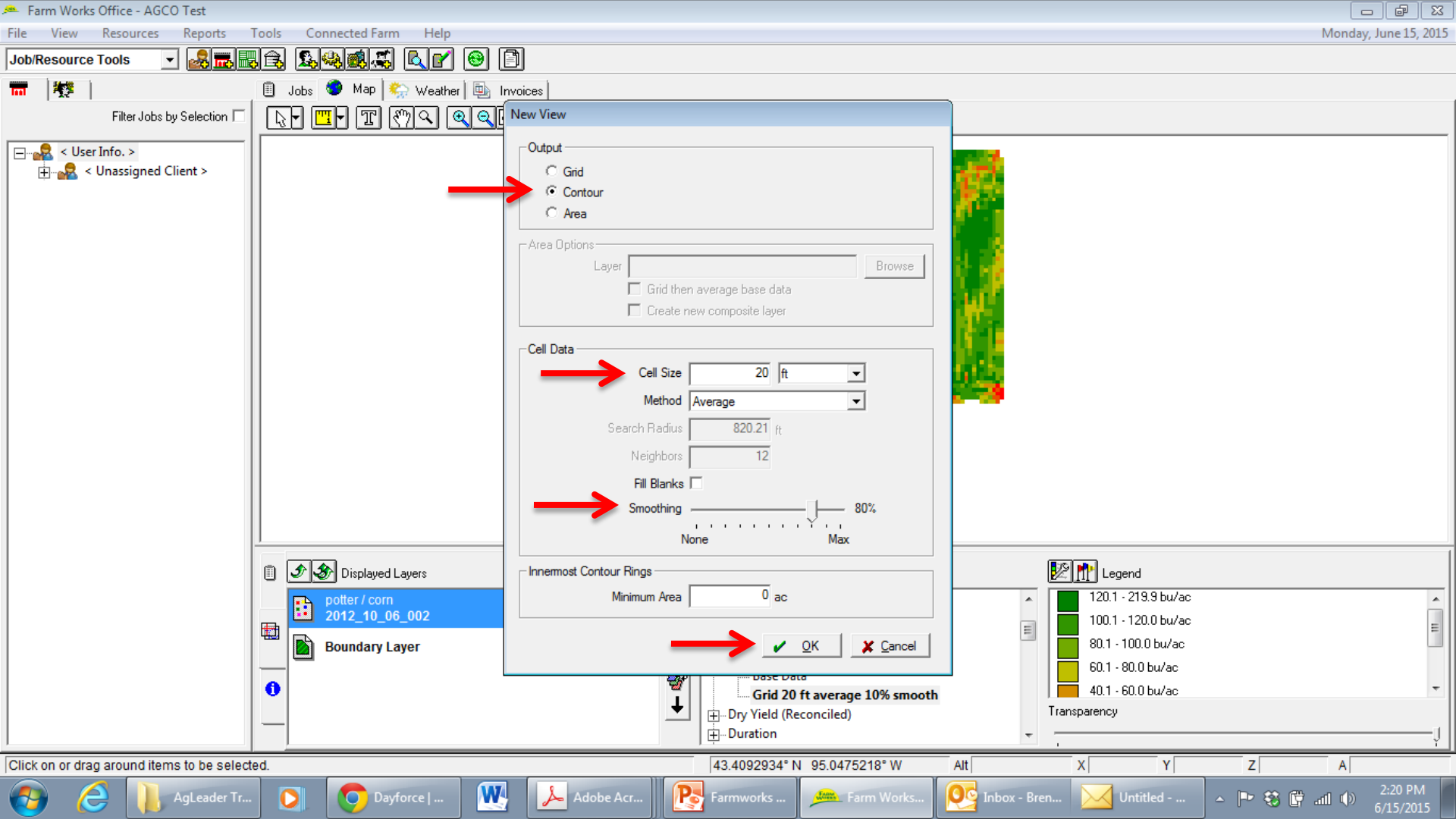


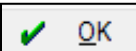


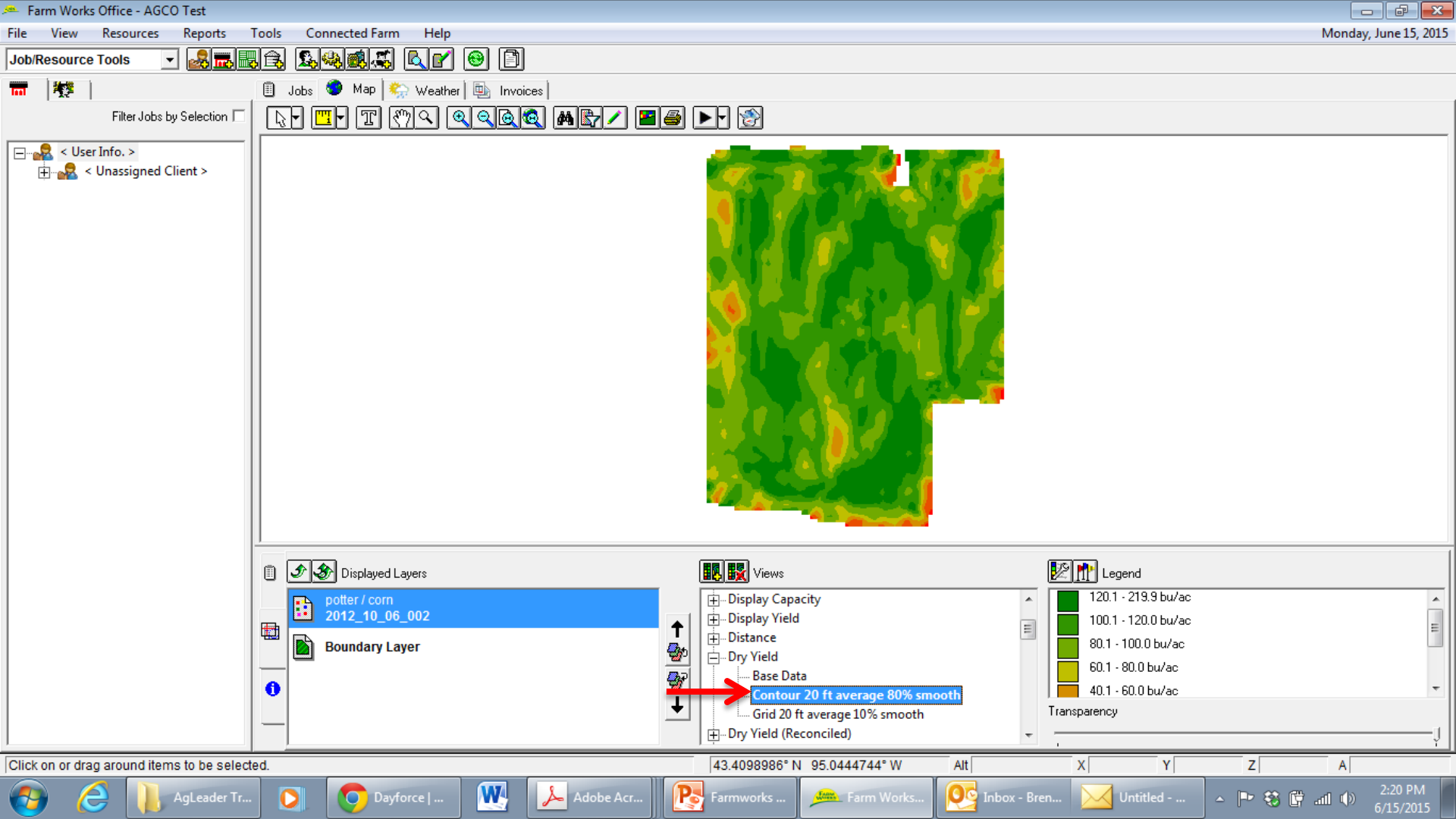
- ***First we will create a grid view by selecting the “Grid” box at the top of the window***
- ***We will utilize a 20 ft cell size since this was the size of the header used to harvest the crop***
- ***Next, we will select 10% smoothing***
- ***Press “OK”*** 



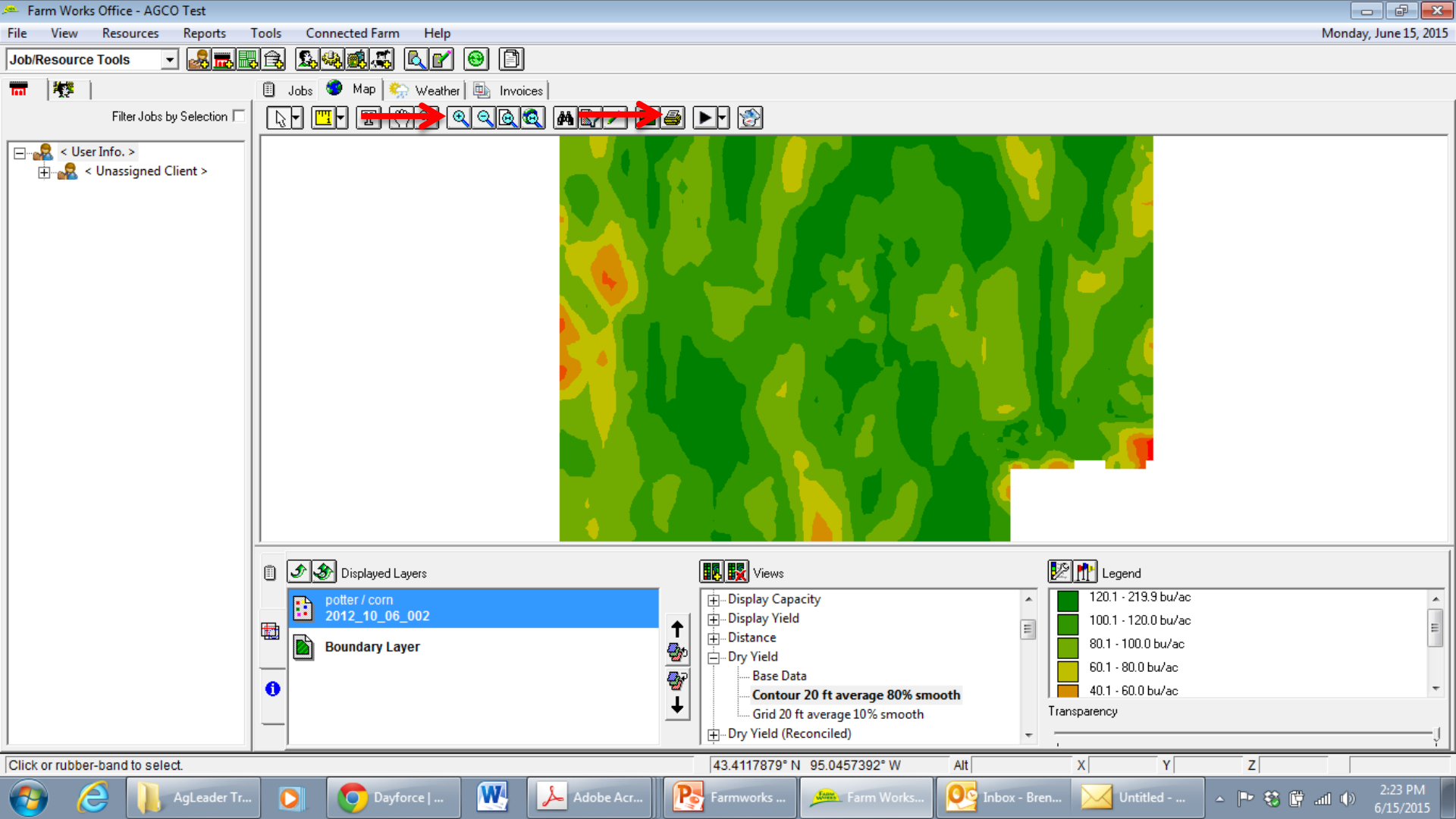
- ***Under the “Dry Yield” tab dropdown the new view will appear***
- ***Next, we will make an additional view with contour selected as the output***
- ***Select the “Add View” tab*** 



- **Select “Contour” at the top of the window**
- **Input 20 ft for the cell size**
- **80% smoothing**
- **Press “OK”** 



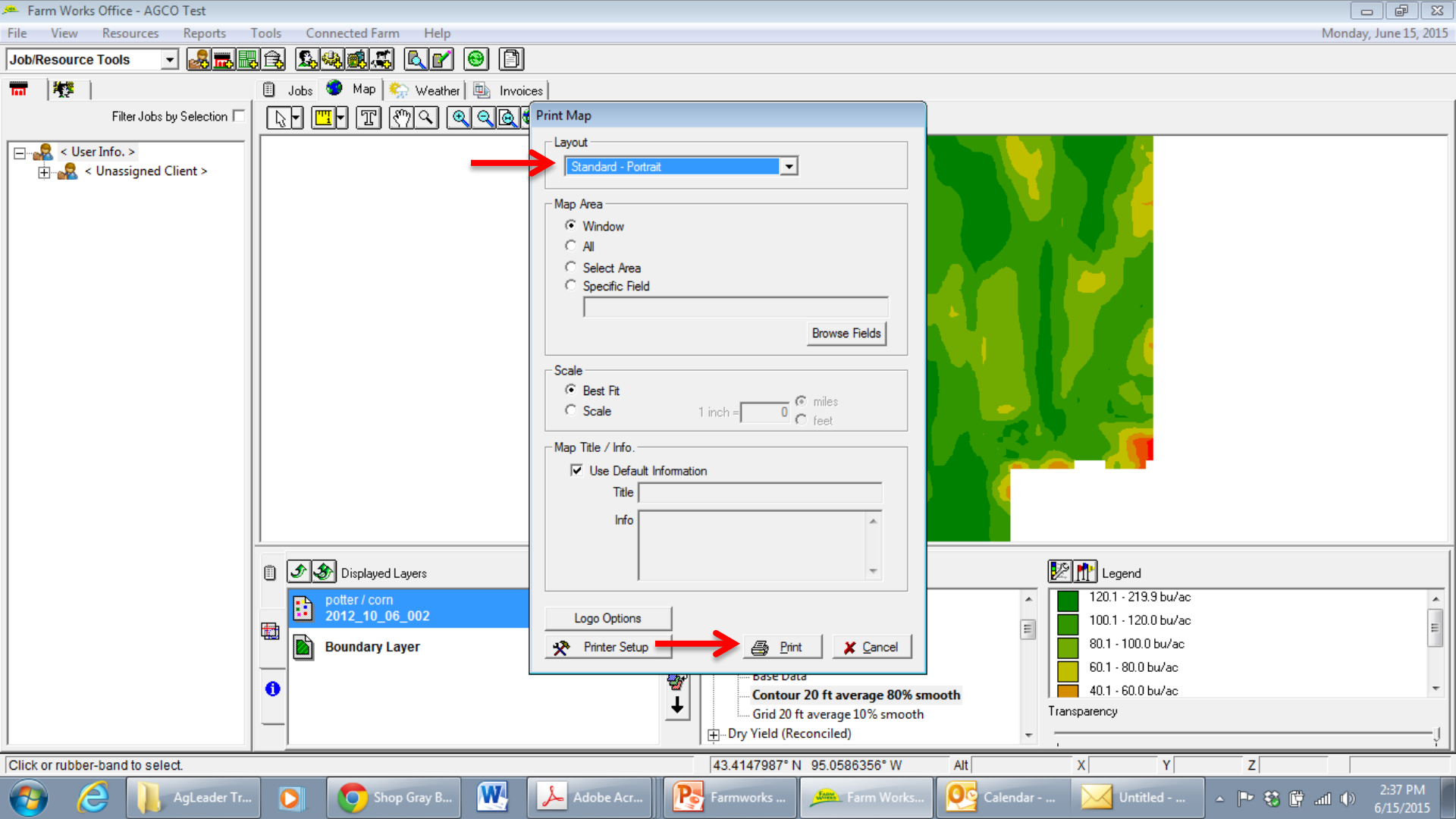
- ***The contour view will appear in the “Dry Yield” tab dropdown***
- ***Next, we will print a field summary report***



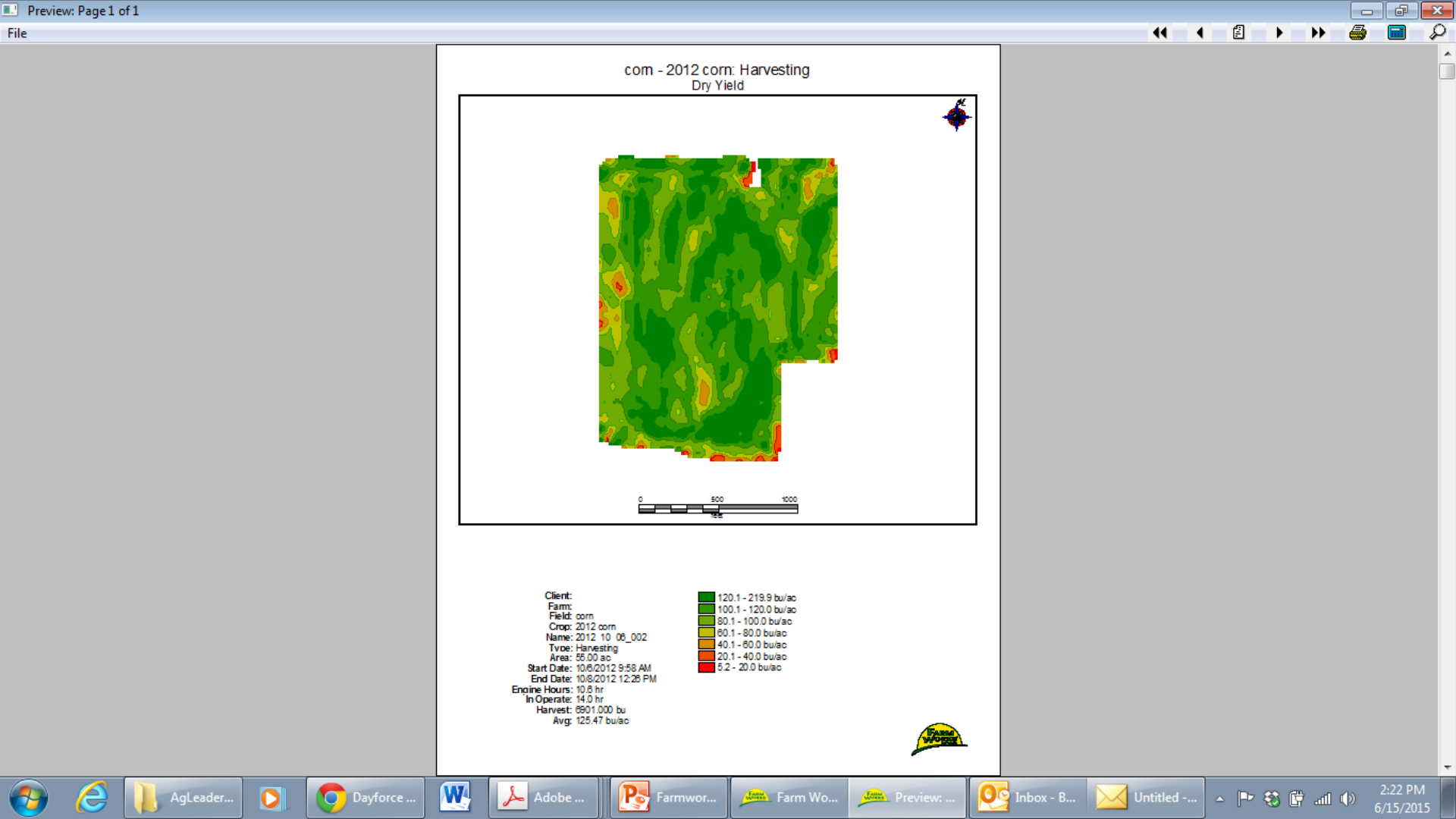
- **Zoom in on the map by pressing the “magnifying glass with a plus sign” one time**
- **Press the “Map Report” icon**







- **Choose your desired layout at the top of the window**
- **Press "Print" to generate the map report**



- **Completed map report of 2012 corn field**